

Standard Features

Interior

Cabinets

- Decorative Glass Cabinet Door Inserts in Select Areas
- Full Extension Ball Bearing Drawer Guides & Hardwood Plywood Drawer Sides
- Hardwood Frame Cabinet Doors
- High Pressure Laminate Plywood Backed Counter Tops
- Honey Strand Bamboo Wood Grain Panel Color
- Solid Lightweight Lumber Core Cabinet Stiles w/ Screwed-Together Joints

Decor

- Color-Coordinated Designer Interiors
- No Wax Embossed Vinyl Flooring
- Night Shades at All Windows Except Kitchen & Bunks
- Attractive Designer Window Valances & Lambrequins
- Oil Rubbed Bronze Accent Lights in Bedroom & Bath
- Plush Upholstery Fabric w/Stylish Accent Fabrics

Kitchen & Living Room

- Dometic® Double Door Refrigerator
- Wedgewood® 3-Burner Range w/Oven & Piezo
- Large Counter Top w/Sweeping Radius
- Power Range Hood w/Light
- Black Acrylic Kitchen Sink w/Extra Large Bowl
- High Rise Oil Rubbed Bronze Faucet
- Decorative Backsplash / Wall Border Behind Kitchen Counter
- 120 Volt to 12 Volt 55 amp Power Converter & Battery Charger
- Jack Digital HDTV TV Antenna w/Booster
- Park Cable Hookup for TV
- 12 Volt AM/FM/DVD/MP3 Stereo w/Auxiliary Input, Interior & Exterior Speakers
- Six Gallon Gas/DSI Water Heater
- Monitor Panel

Bedroom & Bath

- Color Coordinated Quilted Bedspread on All Innerspring Mattresses
- Deluxe Headboard
- Lift-Up Bed Storage w/Gas Piston Struts
- Evergreen® Mattress
- ABS Tub or Shower w/Full ABS Wall Surround
- Neo-Angle Glass Shower Enclosure (Select Models)
- Thetford® Foot-Flush Toilet
- Deluxe Medicine Cabinet w/Mirror & Vanity Light
- Towel Ring, Towel Bar & Toilet Paper Holder
- Skylight Over Shower

Exterior

Roof Construction

- Aluminum Frame, Fully Laminated Roof (90" Wide Models)
- Seamless One-Piece Roof w/12 Year Manufacturer's Warranty
- Awning Drip Rail & Down Spouts
- Lightweight Galvanized Steel Roof Trusses, 16" O.C., w/Ducted A/C (96" Wide Models)

Wall Construction

- Welded Aluminum Frame Sidewalls & Endwalls
- Laminated Construction w/Block Foam Insulation, Steel Cabinet Backers & Latest Technology Substrates

NO-NONSENSE WARRANTY

Manufacturing defects reported to Skyline within one year after original retail delivery of your new Travel Trailer by an authorized dealer will be corrected without charge and within reasonable times. Excluded are misuse (including lack of reasonable maintenance), minor imperfections, alterations, and dealer or owner improper transportation, installation, or hookup.

This warranty gives you specific legal rights. You may have other rights which vary from state to state.

Skyline's suppliers often provide additional warranties on their components beyond the Skyline factory bumper-to-bumper warranty. For example — the range, water heater, furnace, converter, air conditioner, refrigerator, microwave and awning carry two-year supplier warranties. The one-piece roof carries a 12-year warranty. Ask your dealer for full details.

Manufacturer's Notice: All specifications, equipment, and prices are subject to change without prior notice. Production of all models subject to seasonal scheduling. Skyline Corporation reserves the right to improve a model without incorporating these changes in similar models produced at an earlier date.

Consult your automobile dealer and your recreational vehicle dealer to assure the proper match between tow vehicle and trailer. Tow vehicle and recreational unit must be properly equalized for efficient product performance and safety. Before you purchase your recreational vehicle, carefully consider the number of people it will accommodate and its end use. Manufacturer's load capacity restrictions and recommendations must be followed for safe and efficient product performance.

Your Retailer, an independent contractor, who is not an agent of Skyline Corporation, is the party responsible for your purchase contract and any additions, deletions, alterations, or attachments made to or in your recreational vehicle.

- Radius Corner Tinted Safety Glass Clamp Ring Windows
 - Flush Mount Heavy Duty Exterior Trunk Doors w/ Continuous Hinge
 - Patio Convenience Light
 - Radius Black Frame Entry Door w/Screen
 - Assist Handle at Entry Door
 - Lamilux® Silver-Gray Fiberglass Exterior
- #### Chassis Construction
- Cambered Steel Chassis w/Steel Outriggers
 - Sewer Hose Carrying Bumper
 - Battery Rack
 - Electric Brakes on All Wheels
 - Radial Tires w/Trendy Aluminum Wheels
 - Super Lube Hubs on Axles
 - E-Z Flex™ Suspension Equalization
 - Safety Chains & Breakaway Safety Switch
 - Four Stabilizer Jacks (Two on Fifth Wheels)

Floor Construction

- Laminated Floor Construction w/Welded Aluminum Frame, Block Foam Insulation & Plywood Decking
- Tightly Sealed Woven Polyethylene Underbelly

Features

- Holding Tanks w/Drain Outlet
- Water Heater Bypass
- Under-Floor Water Tank for Better Weight Distribution & To Maximize Interior Storage
- Exterior Hitch Light
- Exterior Patio Receptacle
- Molded High Impact ABS Fender Skirt
- 30 amp Power Shore Line

Security & Safety

- Smoke Detector
- Propane Leak Detectors
- Carbon Monoxide Alarm
- Flush Door Latch w/Integral Dead Bolt Lock
- Fire Extinguisher

Popular Options

- Power Side Awning
- Fireplace (Select Models)
- 26" LCD TV

Aussie Package (Required Option)

- 13,500 Btu Roof Air Conditioner
- Large Carousel Microwave Oven w/Clock
- Spare Tire Kit
- Enclosed Underbelly
- A&E® 8500 Series Color-Coordinated Side Awning
- Gas/Electric DSI Water Heater
- Outside Shower
- Folding Entry Assist Handle
- Propane Quick Disconnect on Door Side

KOALA

Super Lite



To discover more about the innovative and impressive Koala by Skyline, scan this code with the QR Reader on your smart phone for instant access to our web site.



KOALA

Super Lite

2013

Travel Trailers & Fifth Wheel



Skyline's exclusive Tow-Lite Technology is the use of ultra lite-weight materials to assemble a more aerodynamic trailer which may be towed by smaller, more fuel-efficient vehicles than conventionally-constructed trailers.



Member
RVIA
RECREATION VEHICLE
INDUSTRY ASSOCIATION

Go RVing

KOALA

Super Lite

BRINGING AMERICA HOME. BRINGING AMERICA FUN.

Your local **KOALA** Super Lite dealer is:

For the name of your nearest Skyline-built RV dealer, call:
Mansfield, Texas 1-800-962-7773

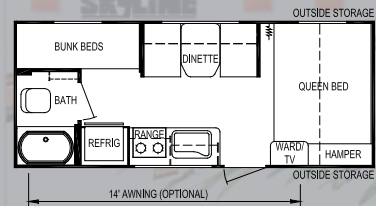


Like us on Facebook

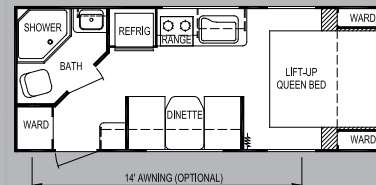
Visit us at our Web Site at www.skylinecorp.com

Effective March 2012

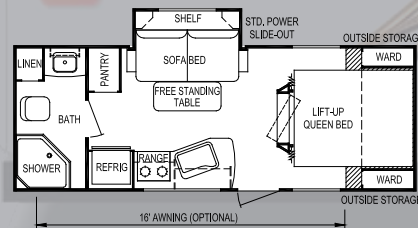
Travel Trailers



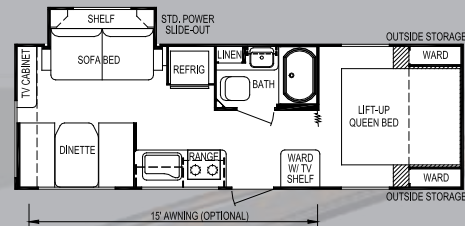
Model 18BH



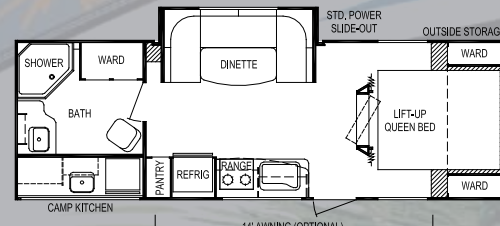
Model 19RB



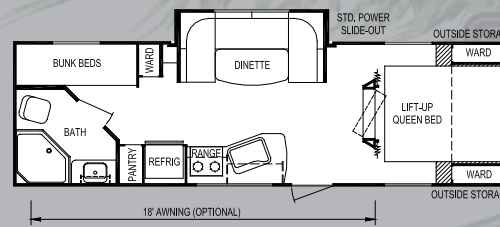
Model 21CS



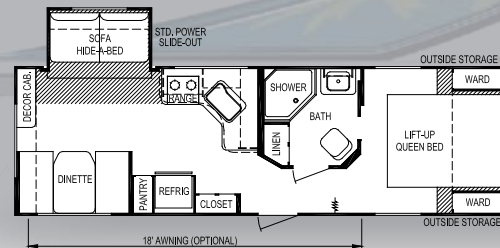
Model 23CS



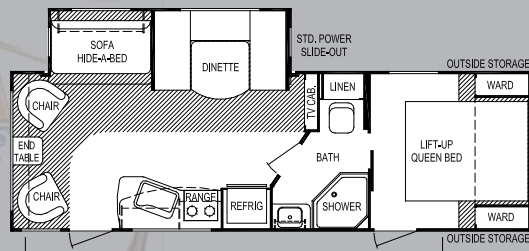
Model 24RBK



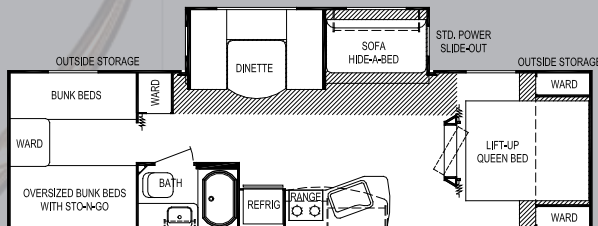
Model 25DS



Model 26CK



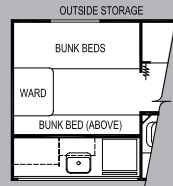
Model 26SS



Model 29SS



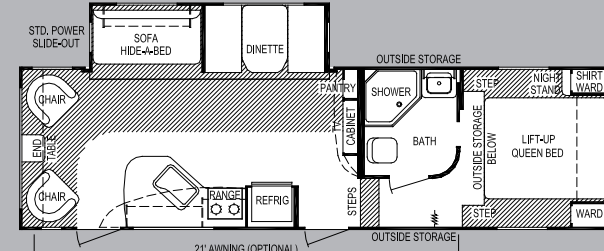
Skyline's exclusive Tow-Lite Technology is the use of ultra lite-weight materials to assemble a more aerodynamic trailer which may be towed by smaller, more fuel-efficient vehicles than conventionally-constructed trailers.



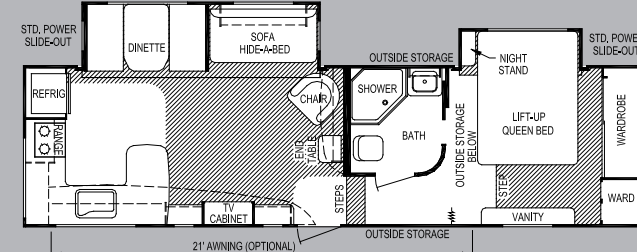
Option Camp Kitchen Model 29SS



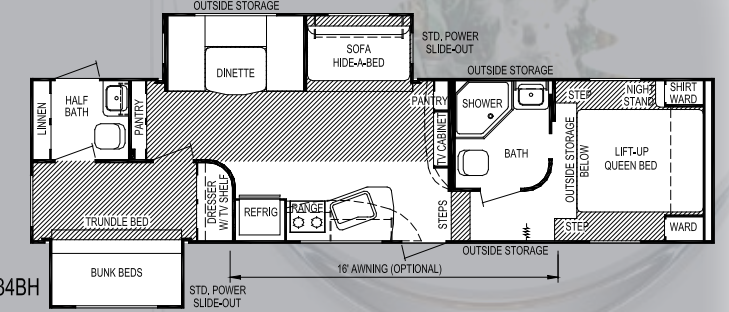
Fifth Wheels



Model 30SS



Model 32RKS



Model 34BH



KOALA Super Lite Specifications

Model	Travel Trailers									Fifth Wheels			
	18BH	19RB	21CS	23CS	24RBK	25DS	26CK	26SS	29SS	30SS	32RKS	34BH	
Weights	Unloaded Vehicle Weight (see Note 2)	2,875	3,150	3,450	3,675	4,000	4,100	4,875	4,875	5,325	6,075	6,900	7,250
	Dry Hitch Weight	350	400	425	500	450	600	675	675	825	1,525	1,575	1,650
Dry Axle Weight		2,525	2,750	3,025	3,175	3,550	3,500	4,200	4,200	4,500	4,550	5,325	5,600
	GVWR (Total Capacity of Trailer)	4,950	4,950	4,950	5,940	5,940	5,940	7,750	7,750	7,750	9,600	9,600	10,200
Accommodations	Carrying Capacity (see Note 2)	1,925	1,650	1,325	2,075	1,750	1,650	2,650	2,650	2,200	3,325	2,425	2,650
	Sleeping (standard / optional) Bed Size	5	3	4	6	4	6	6	6	9 / 10	6	6	6
Measurements	Second Bed Size	60" x 74"	60" x 74"	60" x 74"	60" x 74"	60" x 74"	60" x 74"	60" x 74"	60" x 74"	60" x 74"	60" x 74"	60" x 80"	60" x 74"
	Dinette Size	(2) 28" x 76"	N/A	N/A	N/A	N/A	(2) 26" x 76"	N/A	N/A	(2) 28" x 76"	N/A	N/A	38" x 76"
	Sofa	(2) 38" x 74"	N/A	N/A	N/A	N/A	(2) 38" x 74"	N/A	N/A	(2) 38" x 74"	N/A	N/A	(2) 30" x 76"
		44" x 79"	N/A	N/A	N/A	N/A	44" x 79"	N/A	N/A	44" x 79"	N/A	N/A	44" x 79"
Capacities	Exterior Length (see Note 3)	21'-9"	22'-9"	24'-1"	26'-6"	27'-8"	28'-11"	29'-6"	29'-3"	32'-4"	31'-2"	32'-11"	34'-11"
	Exterior Width (see Note 3)	90"	90"	90"	90"	96"	90"	96"	96"	96"	96"	96"	96"
	Exterior Height (see Note 3)	9'-8"	9'-8"	9'-8"	9'-8"	9'-10"	9'-8"	10'-8"	10'-8"	10'-8"	12'-1"	12'-1"	12'-1"
	Interior Height	76"	76"	76"	76"	78"	76"	78"	78"	78"	84"	84"	84"
	Fresh Water System (gallons)	42	42	42	42	42	42	42	42	42	42	42	42
	Gray Water Tank (gallons)	40	40	40	40	40	40	40	40	40	80	80	80
Notes	Black Water Tank (gallons)	40	40	40	40	40	40	40	40	40	40	40	40
	Air Conditioner Size (Btu; Opt.)	13,500	13,500	13,500	13,500	13,500	13,500	13,500	13,500	13,500	13,500	13,500	13,500
	Awning Size (Opt.)	14'	14'	16'	15'	14'	18'	18'	21'	18'	21'	21'	16'
	Converter Size (amps)	55	55	55	55	55	55	55	55	55	55	55	55
Water Heater (gallons)	Furnace Rating (Btu)	18,000	18,000	18,000	25,000	25,000	25,000	25,000	25,000	25,000	25,000	25,000	25,000
	Propane Gas Capacity (pounds)	60	60	60	60	60	60	60	60	60	60	60	60
Tires	ST205/75R14-C	6	6	6	6	6	6	6	6	6	6	6	6
	ST205/75R14-C	6	6	6	6	6	6	6	6	6	6	6	6

Notes

- All weights, dimensions, and capacities shown are approximate values.
- Unloaded vehicle weight and carrying capacity will vary depending upon optional equipment. Full propane tanks are factored into carrying capacity. Skyline weighs every unit at the factory. See trailer weight information label located inside the front entry door for specific unloaded vehicle weight and cargo carrying capacity.
- Dimensions stated to industry standards. Exterior length includes approximately a four foot hitch on travel trailers. Exterior height includes air conditioner, if installed. Exterior width does not include the width of the awning, if installed.